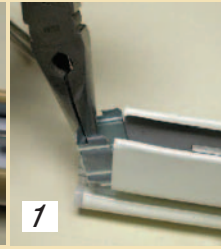
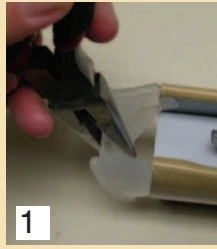


How to Replace a Wand Tilt on Mini Blinds

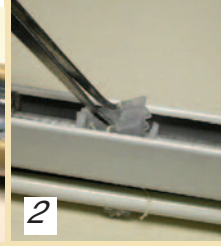
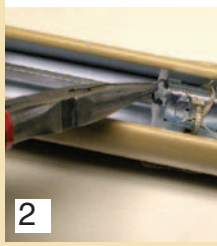
These instructions are for the ConQuest Plus and LX models. (ConQuest and Micro will be in parentheses with pictures in the right column).

Begin by removing blind from mounting brackets in window and lay on flat work surface.

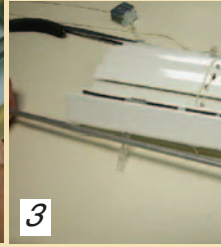
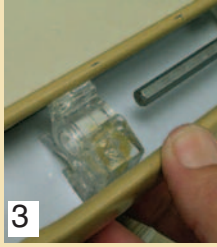
1. Remove headrail end stiffener from wand tilt end. (Remove headrail end stiffener from wand tilt end.)



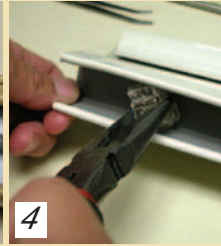
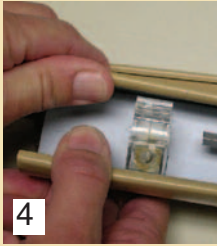
2. Remove C-clamp from between drum and side of rod support. The clamp keeps tilt rod from moving from side to side. (There are no C-clamps in ConQuest and Micro. Instead, remove tilt rod support ladder clamps from tilt rod.)



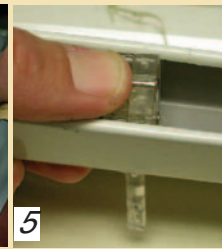
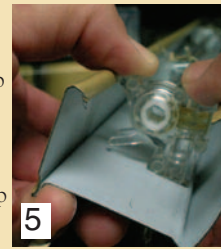
3. Slide tilt rod from wand tilter. (For ConQuest and Micro the tilt rod needs to be removed completely)



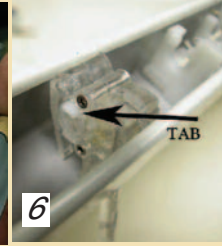
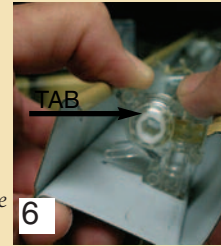
4. Spread headrail apart at wand tilt location and remove wand tilt. (ConQuest and Micro are smaller and will not spread as easily; grab wand tilter with pliers and twist to one side and then remove wand tilter from headrail.)



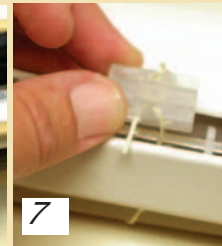
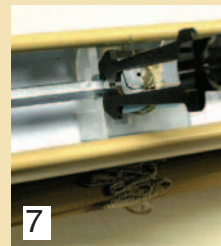
5. The new wand tilt will have a lip on front and this will fit into opening. (ConQuest and Micro will not have a lip in front.) Position wand tilter in place and snap into back lip of headrail. (ConQuest and Micro will snap into place in back lip of headrail.)



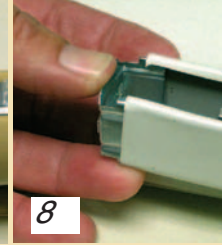
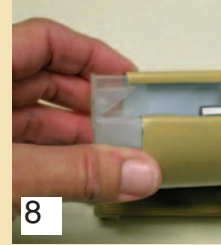
6. Before pushing rod tilt back into wand tilter, position tab at top otherwise tilter will not thoroughly rotate. (ConQuest and Micro also have a tab to be positioned at top before replacing tilt rod.)



7. Replace C-clamp. (Replace ladder clamps, making sure not to twist ladder.)



8. Replace end stiffeners.



9. Replace blind into mounting brackets in window.